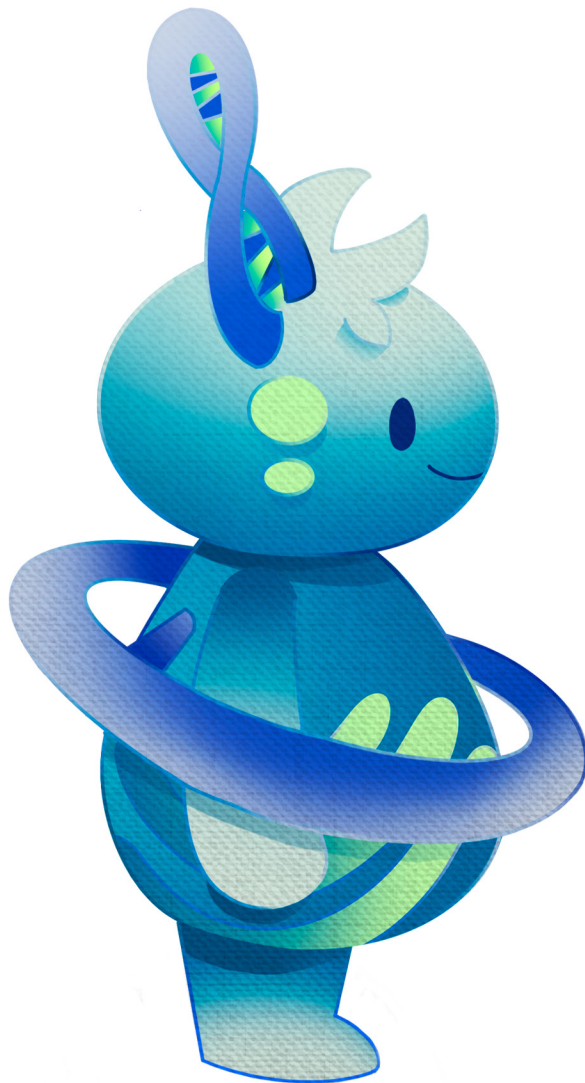




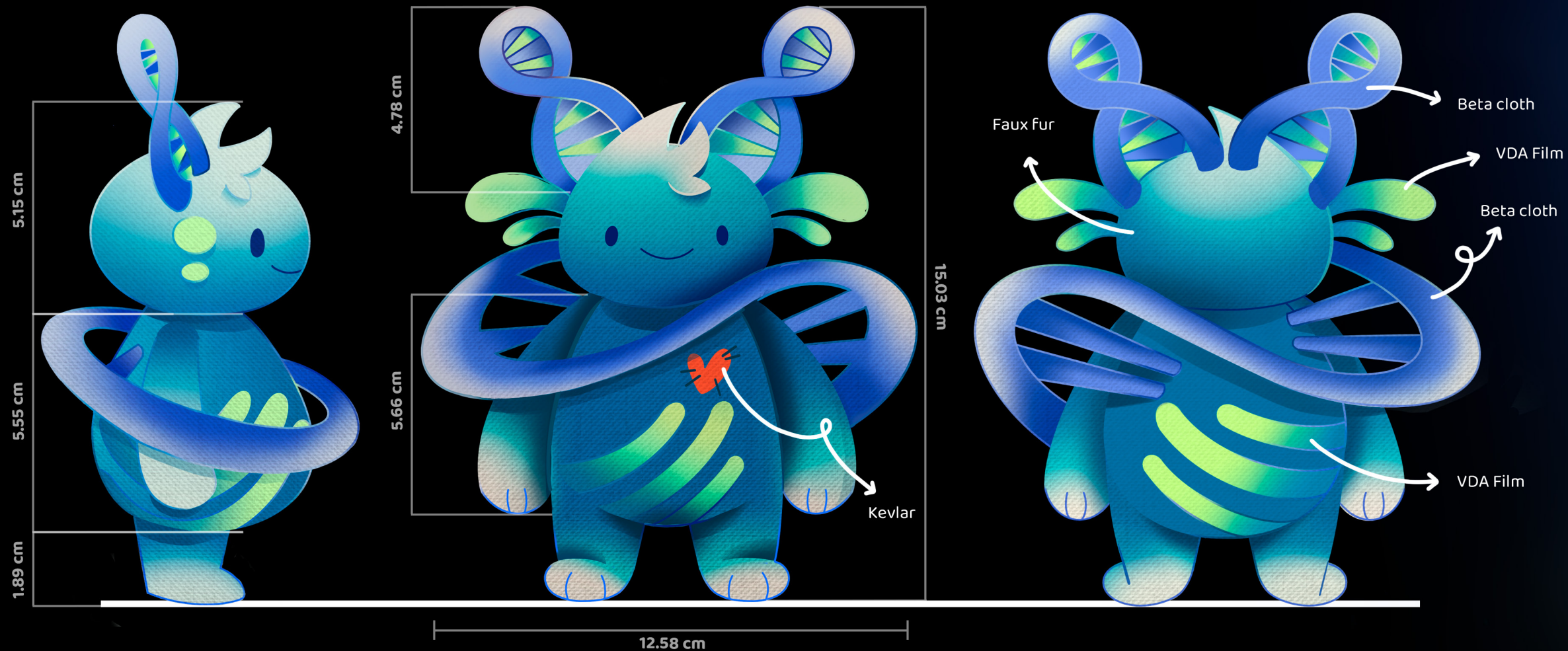
Corey The explorer
Daniela Villanueva, Peru



Corey The explorer
Daniela Villanueva, Peru



Corey The explorer
Daniela Villanueva, Peru



Corey

The explorer

A friendly, **cuddly creature with a heart full of curiosity** ready to join the Artemis II crew on their new journey.

Corey was created as a **reflection of human DNA**, an essential thread to humanity and the whole life. DNA connects all people on Earth, **and it links us to the cosmos and galaxies**. The atoms that make up our DNA were born in the heart of stars, scattered across the galaxy. Corey was inspired by the concept of this idea: that the structures of the universe echo the patterns impregnated within us. Just as galaxies spiral and stars ignite, our DNA carries the blueprint of life and creation. **Corey is the bridge between humanity and the cosmos.**

Color scheme:



Materials:

- Flame and temperature resistant sewing thread.
- Faux fur.
- Polyester Fiberfill.
- Beta cloth.
- Kevlar.
- VDA Film.