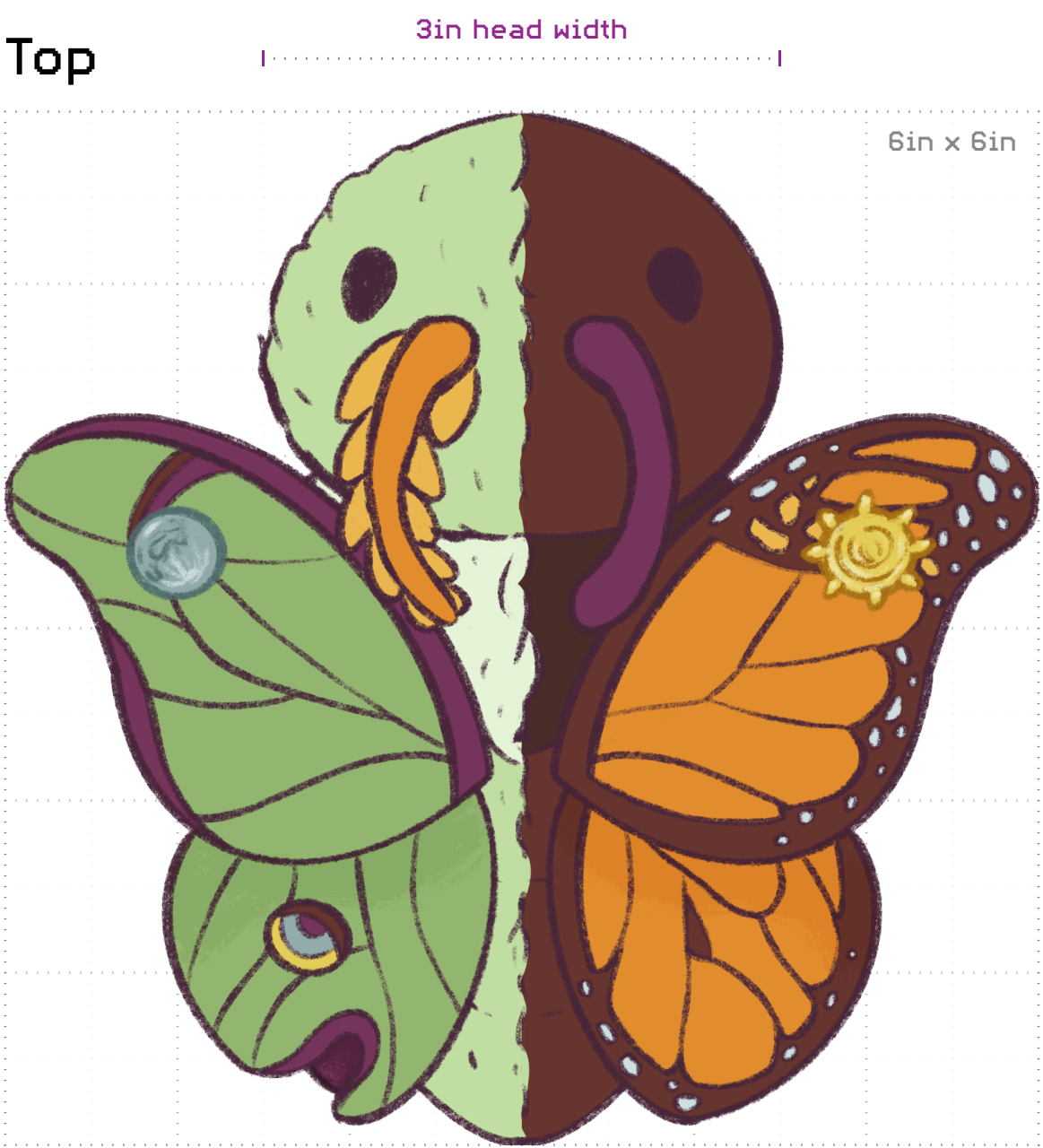


Moon Mascot: NASA Artemis II ZGI Design Challenge

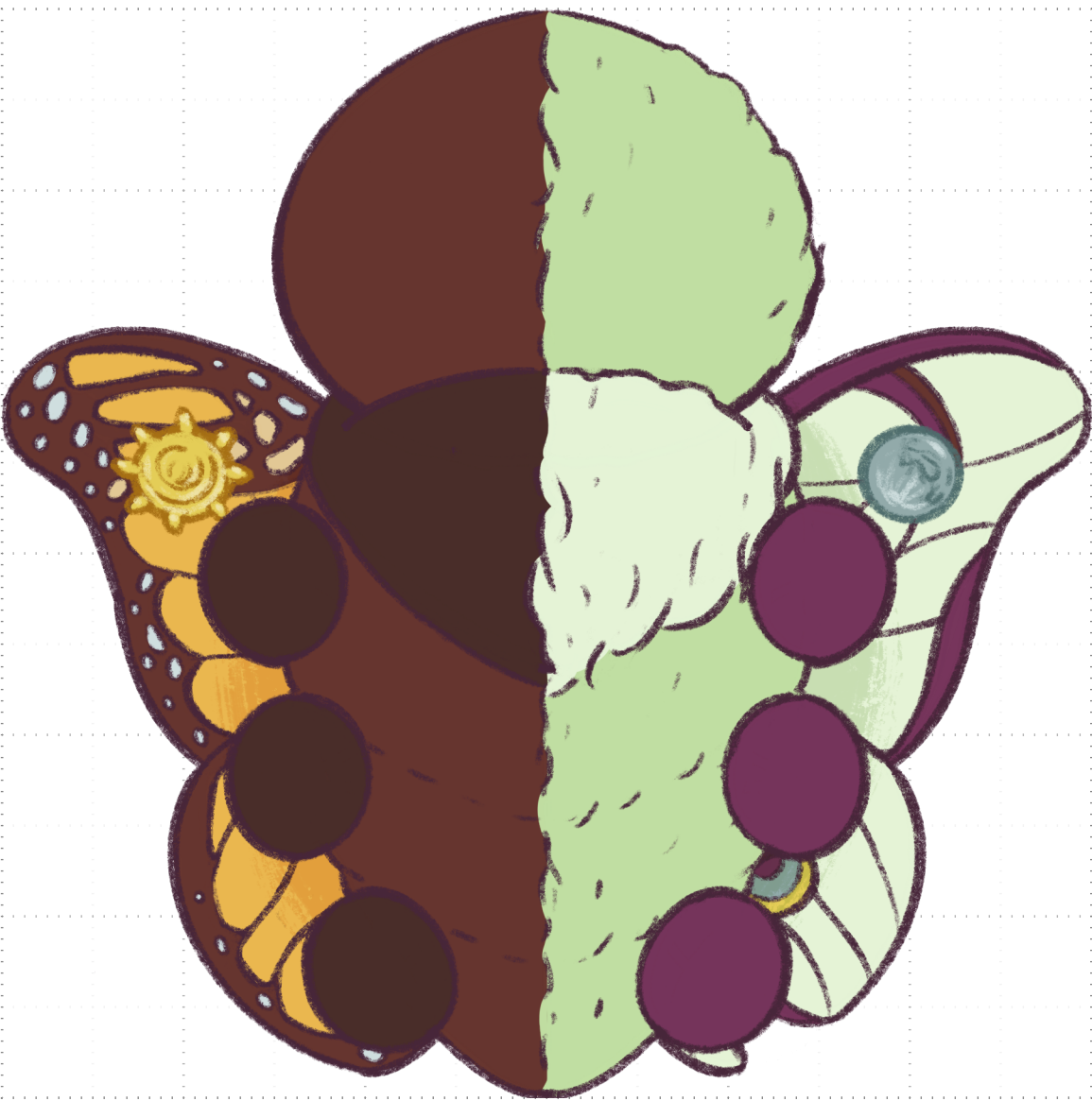
Submission Title: Soluna Flier

Designer: Savon Blanchard

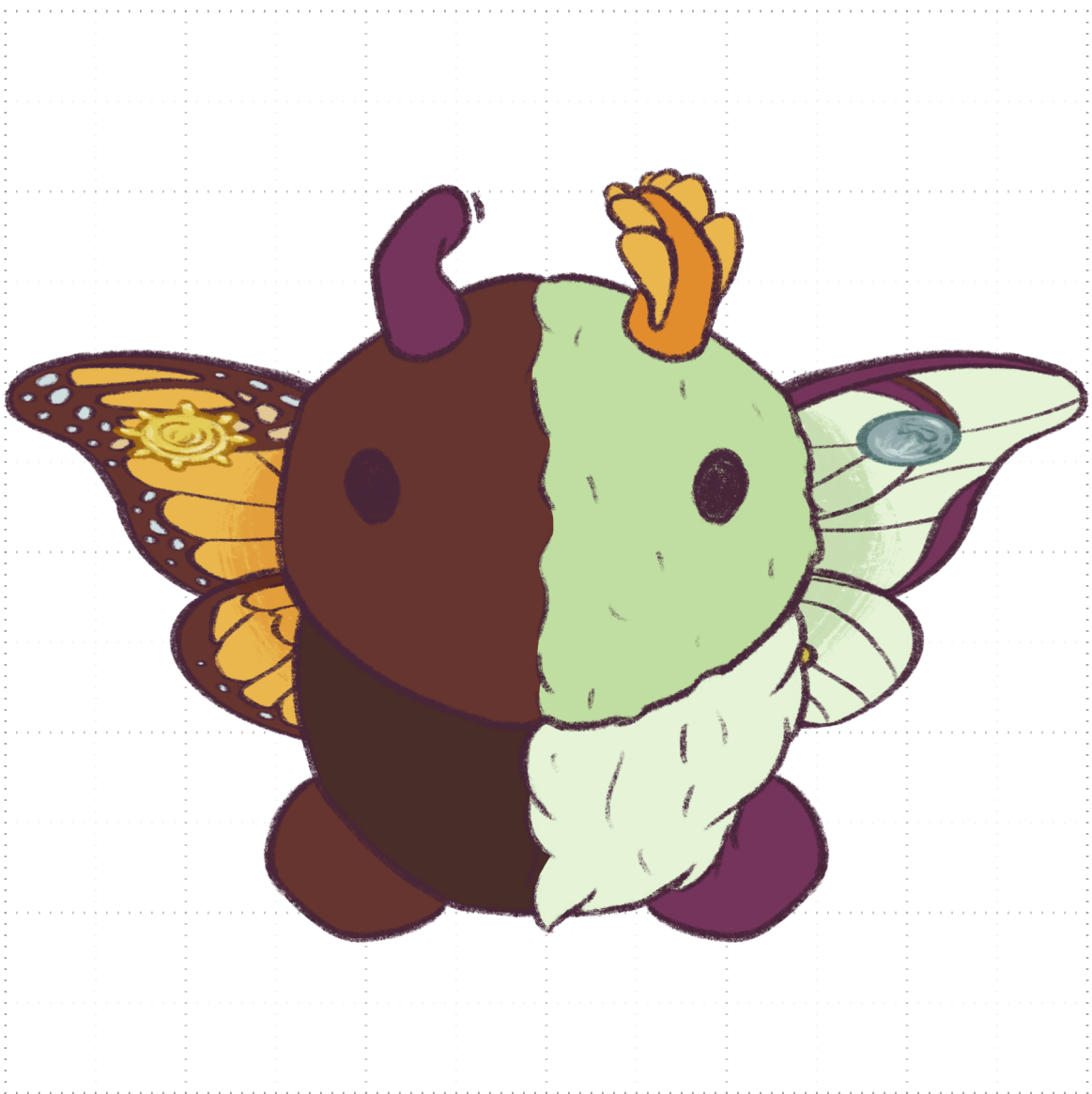
Top



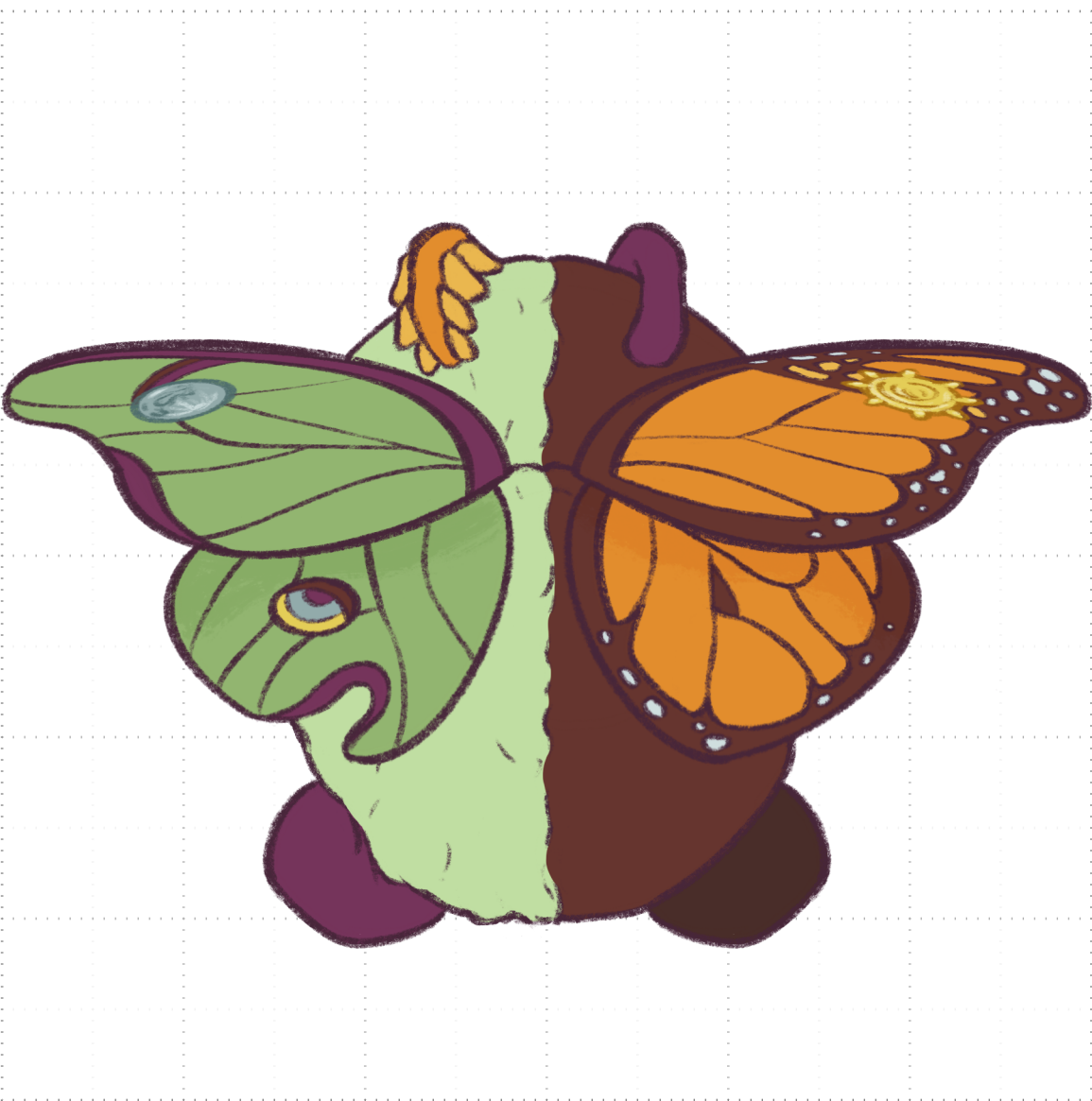
Bottom



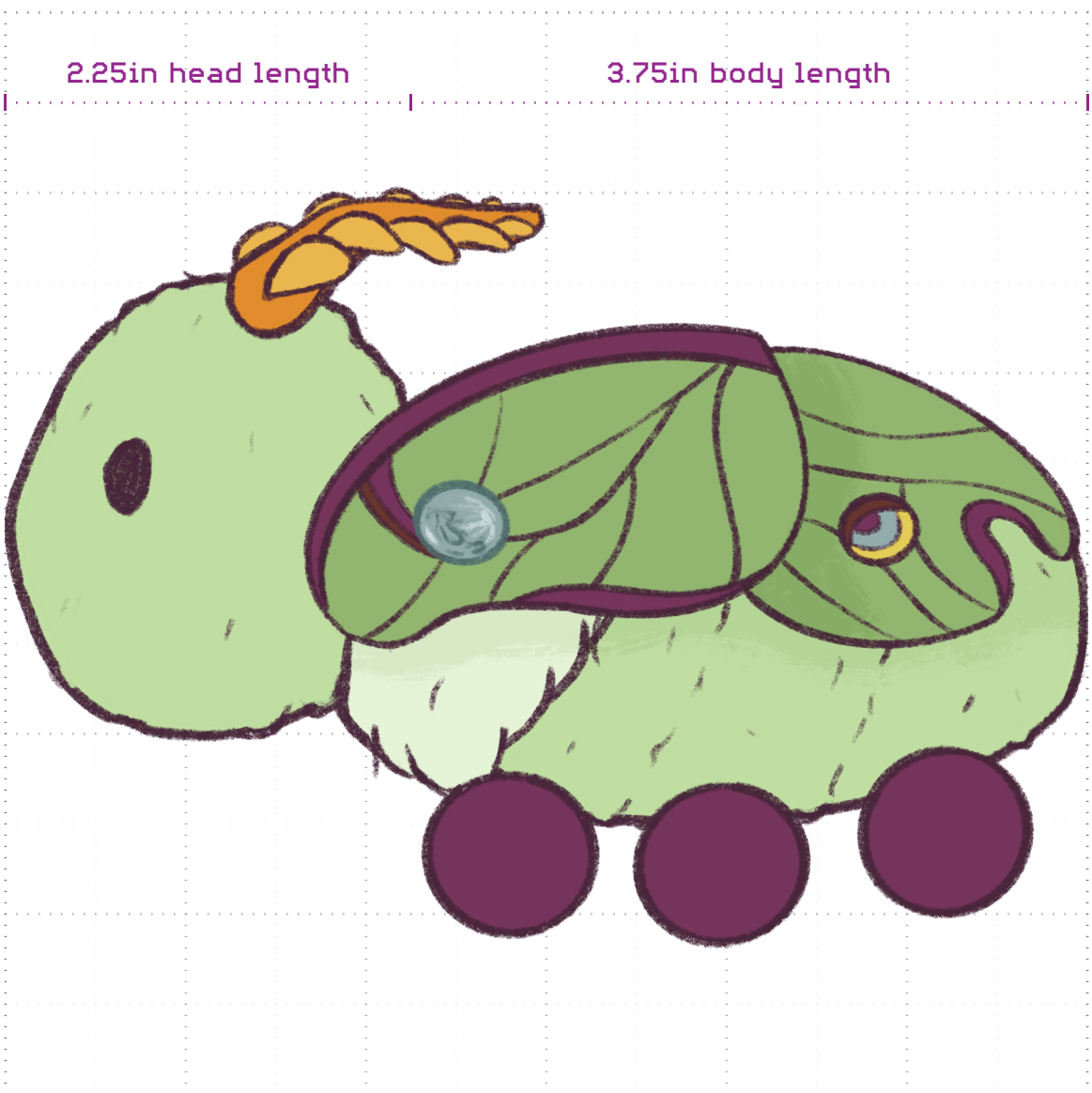
Front



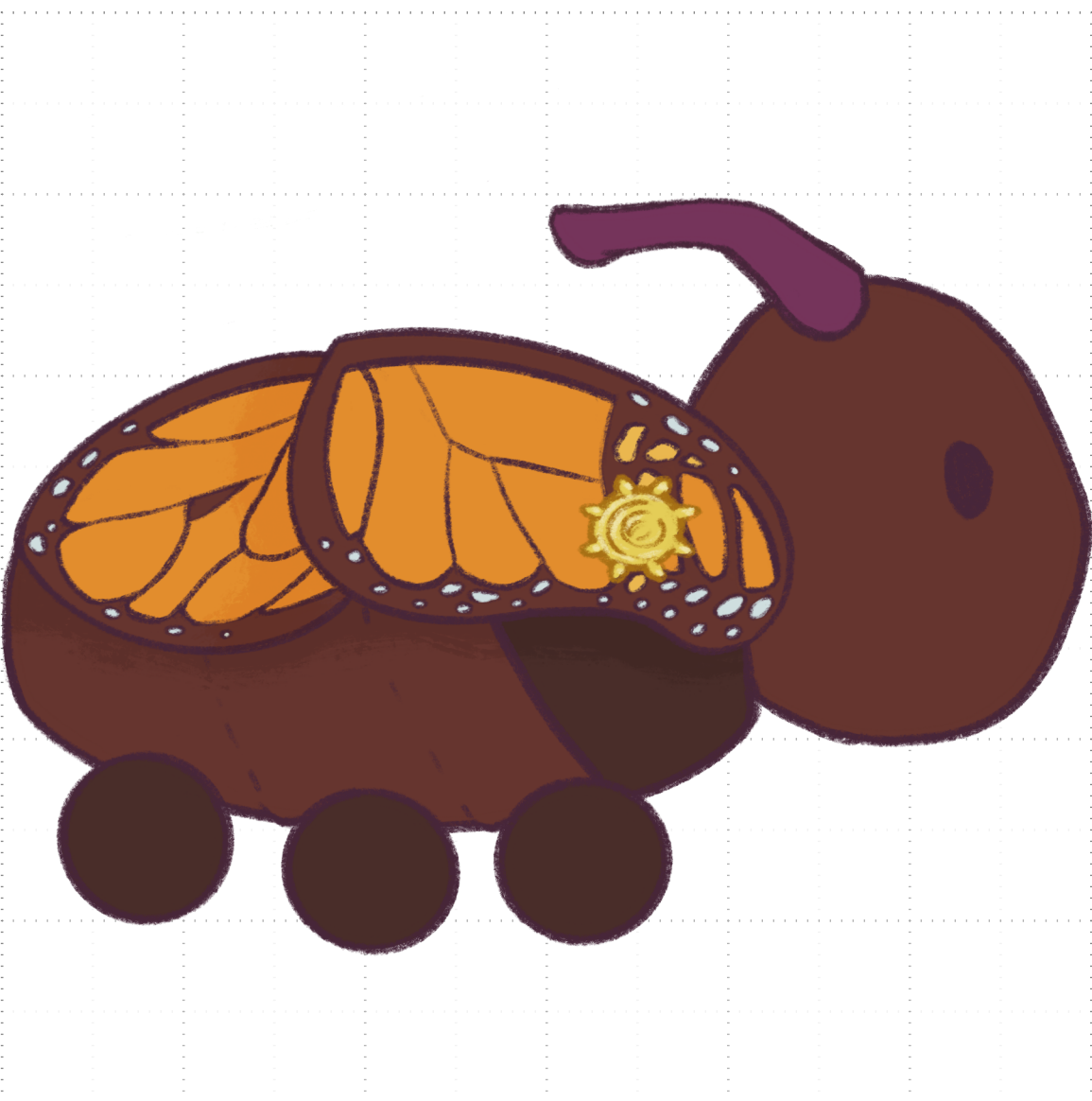
Back



Right side



Left side



Soluna Flier unites sun and moon, past and future, Apollo and Artemis. This moth-butterfly hybrid ZGI symbolizes duality, transformation, and optimism. Ready for flight, Soluna makes a great mascot and companion for the Artemis II crew.

General materials

Flame and temperature resistant sewing thread
Dark purplish brown, dark mint green

Stuffing
Polyester fiberfill

Eyes
Embroidered thread
Dark purplish brown

Luna moth side

Antenna
Cotton
Rich orange, golden orange

Head and body
Faux fur
Mint green, pale mint green
Note: "neck" area has longer fur

Wings
Base
Cotton
Dark mint green (topside), pale mint green (underside)

Moon emblem
Embroidered thread
Dark teal-grey, medium teal-grey, light teal-grey

Eyespot
Embroidered thread
Warm brown, reddish purple, medium teal-grey, medium yellow

Legs
Cotton
Reddish purple

Monarch butterfly side

Antenna
Cotton
Reddish purple

Head and body
Cotton
Warm brown, dark brown

Wings
Base
Cotton
Rich orange (topside), golden orange (underside)

Sun emblem
Embroidered thread
Dark yellow, medium yellow, light yellow

Spots
Embroidered thread
Light teal-grey, golden orange (topside), light orange (underside)

Legs
Cotton
Dark brown