



FRONT

5.91 in (15cm)

5.31 in (13.5cm)

R 254  
G 251  
B 223  
**BODY**  
**FAUX FUR FABRIC**

R 254  
G 223  
B 241  
**CHEEKS**  
**NOMEX THREAD**

R 0  
G 192  
B 250  
R 0  
G 50  
B 134  
R 21  
G 32  
B 96  
R 49  
G 60  
B 200  
R 255  
G 255  
B 255  
R 255  
G 242  
B 130  
R 255  
G 208  
B 34  
**EYES (EMBROIDERY)**  
**NOMEX THREAD**

R 255  
G 255  
B 255  
**FILLING**  
**POLYESTER FIBERFILL**





A Cloud Aglow with Moonlight and Hope



SIDE

5.91 in (15cm)

3.46 in (8.8cm)

R 254  
G 251  
B 223

**BODY**  
**FAUX FUR FABRIC**

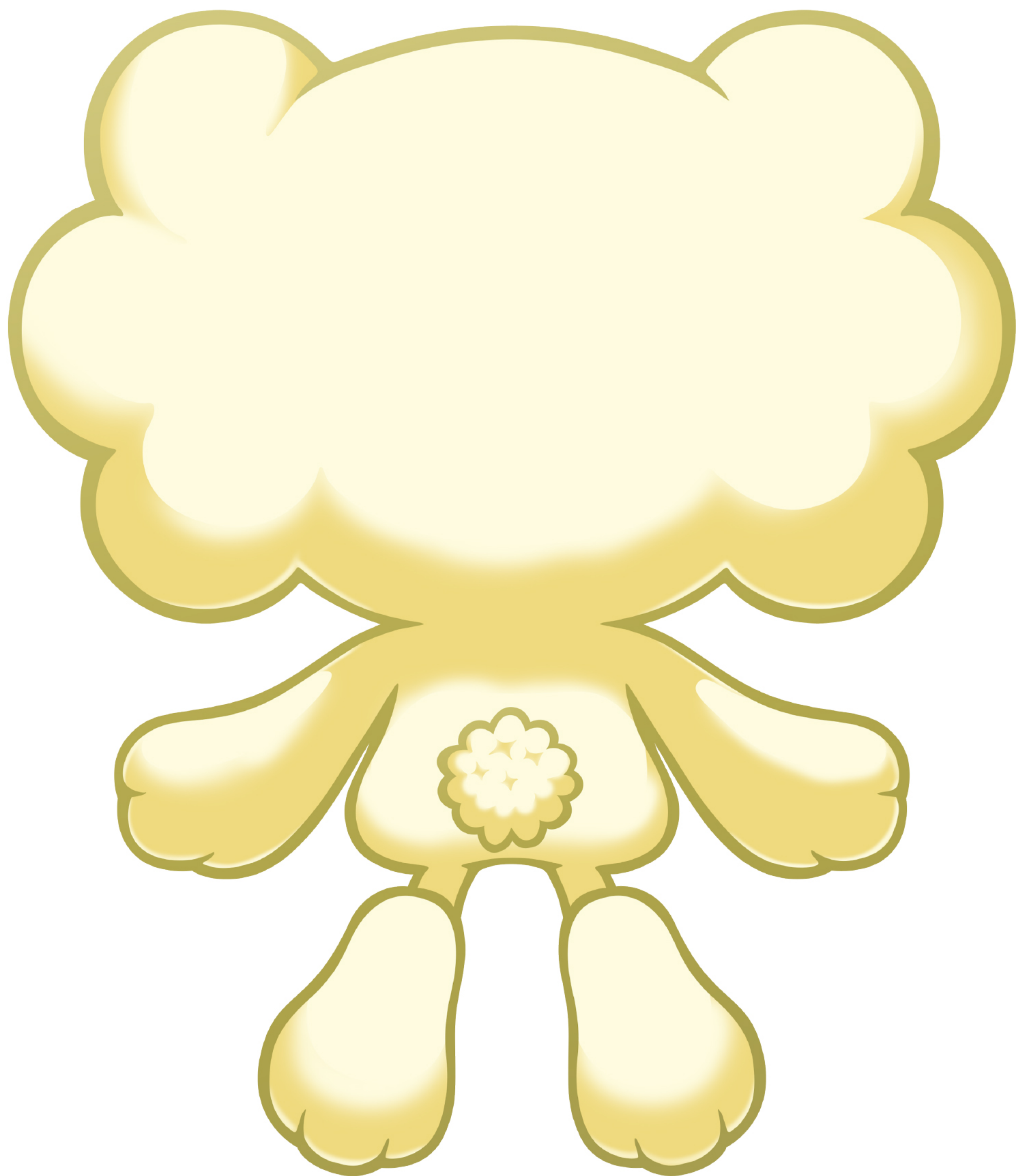
R 255  
G 255  
B 255

**FILLING**  
**POLYESTER FIBERFILL**





A Cloud Aglow with Moonlight and Hope



BACK

5.91 in (15cm)

3.54 in (13.5cm)

R 254  
G 251  
B 223

**BODY**  
**FAUX FUR FABRIC**

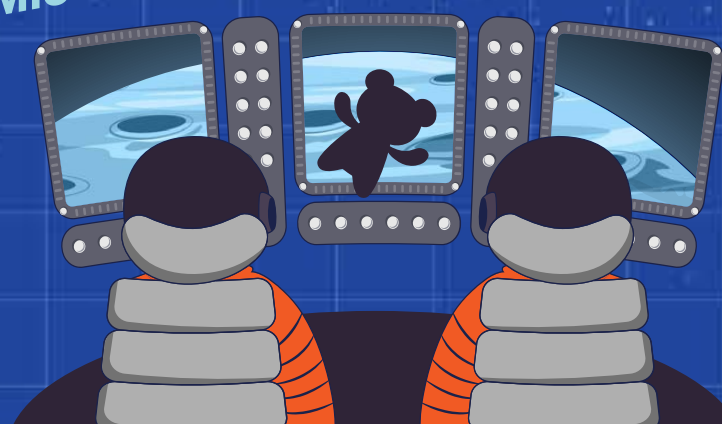
R 255  
G 255  
B 255

**FILLING**  
**POLYESTER FIBERFILL**



# MOON MASCOT

NASA ARTEMIS II ZGI DESIGN CHALLENGE



Team Name (optional)

Team Lead Full Name

Team Lead Username

Submission Title

Description of the design (100 words max)

An explanation of why you created the design and why it meets the design requirements. (100 words max)

A description of any motion your ZGI may perform during spaceflight. (100 words max)

An explanation of how your design is meaningful to the Artemis II mission, the Artemis campaign, and/or its significance to exploration and discovery. (100 words max)