

# MOON MASCOT

NASA ARTEMIS II ZGI DESIGN CHALLENGE

Freelancer & Space Prize

Submission BY

Richellea Quinn Wijaya,  
Singapore — Year 8

Team Lead

Amanda Colleen  
Wijaya, Singapore

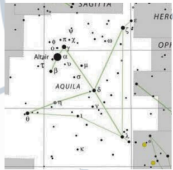
# MEET... PARSEC!

**Parsec:** A unit of distance that equals 3.26 light-Years. It's the very least he would go exploring outer and deep space.

## Design DeConstruction



Taken From NASA



Taken From Earthsky

### 2 | Head

His head is white, designed after the OCSS spacesuit helmet and a waning/waxing crescent. It also has the shape of Orion's crew Module.

The stars around his eyes form the aquila (eagle) constellation.



Taken From NASA

### 1 | Wings

The four wings were designed to resemble the Orion spacecraft's solar panels. He can use them to form an Orion space-craft esque silhouette. Four is a prevalent motif in his design.



### 3 | Body

It is designed after the OCSS spacesuit; with orange being the main colour of the spacesuit, and the patterns representing the blue straps and features on it.



American robin, taken from Adobe Stock



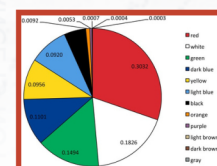
Wandering Albatross, taken from WorldAtlas

## General

Parsec is a combination of different types of birds from around the world—in many cultures, birds are associated with mobility, resilience, intelligence, and connecting Earth and the divine.



Taken from Live Science



Taken from Semi-automatic color analysis for brand logos

### 4 | Colours

The four colours on the tips of his wings and tail are the four most common colours used in national flags. The distinctiveness of these four colours also represent the four Artemis astronauts.

Parsec's head feathers are a nod to how white light is actually made out of many different colours, symbolising the unification of countries, especially in making the Artemis I and II possible.



# THE Z.G.I

# COLOURS MATERIALS

Shaded for visualisation



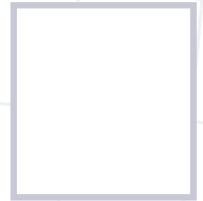
## Colours



#0F315e



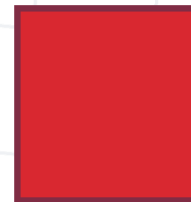
#ba4b29



#FFFFFF



#1b52ad



#d92830



#00aa5b



#abb9c4

Common Descriptors  
(left to right)

- |                |                    |
|----------------|--------------------|
| 1. Navy Blue   | 5. Red             |
| 2. Dark Orange | 6. Cool Green      |
| 3. White       | 7. Cool Light Grey |
| 4. Cobalt Blue |                    |

## Materials

### • Faux fur

Most of the ZGI—its body, head, face, wings, and tail will be made of faux fur.

### • Polyester fiberfill

This will be the ZGI's plush filling.

### • Flame & temperature resistant sewing thread

The details on its face and its limbs and head will be embroidered and sewn respectively with a type of Meta-aramid fiber.

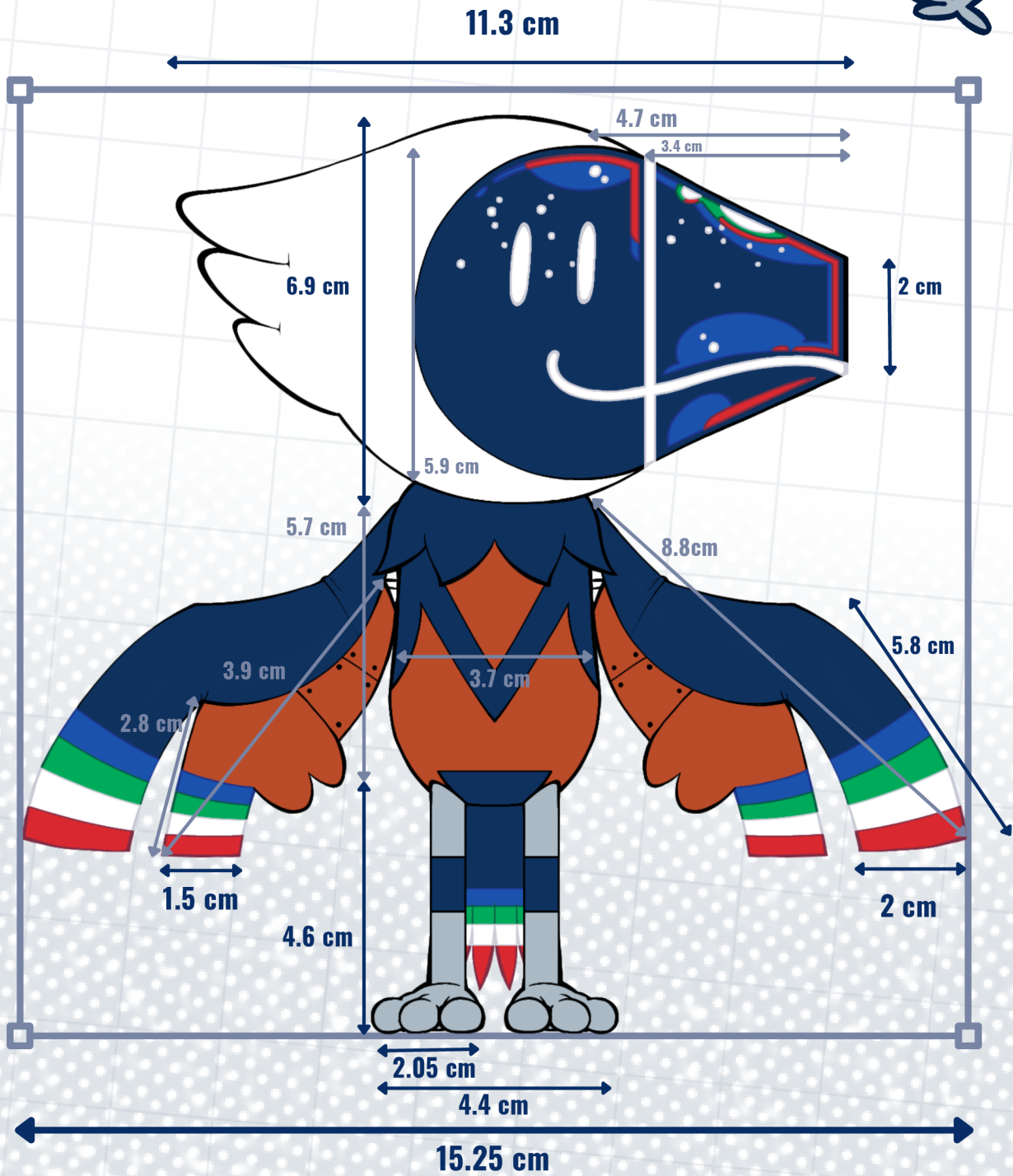
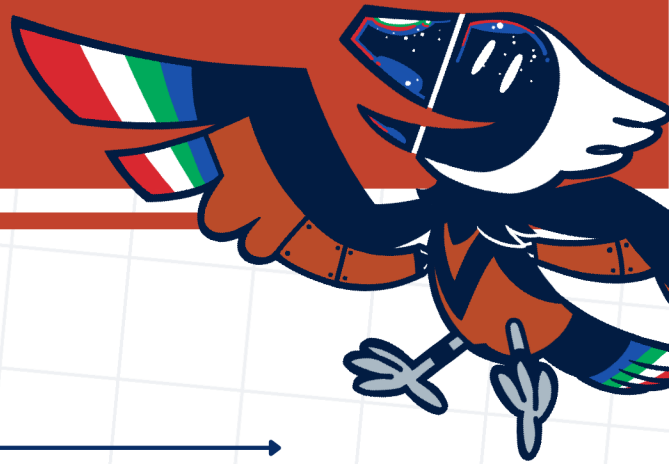
### • Beta Cloth

The exterior of the ZGI's avian-derivative legs will be composed of beta cloth.

### NOTE

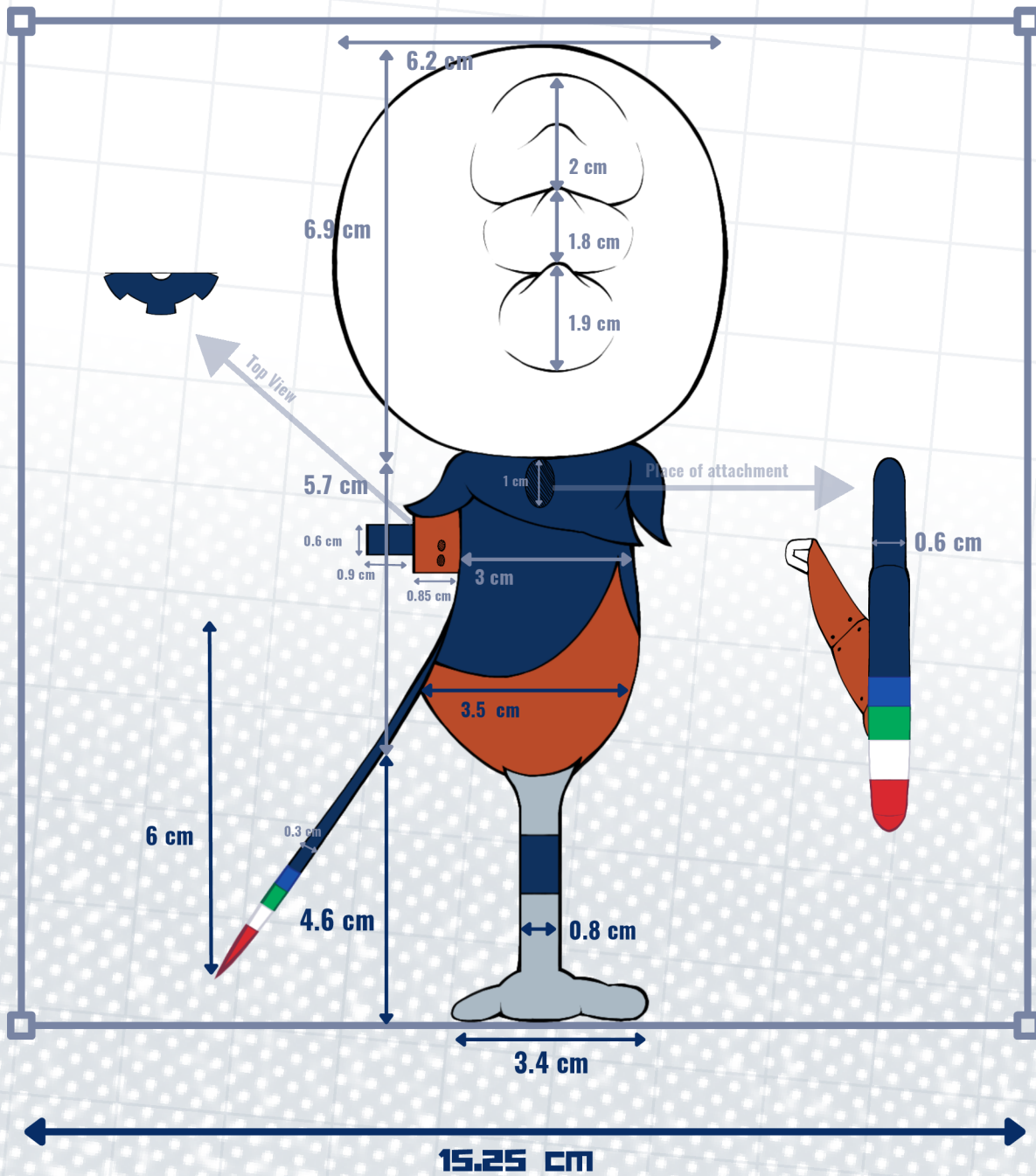
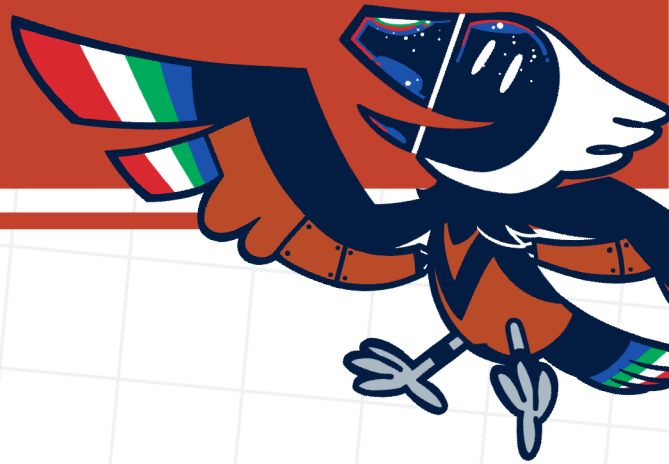
The Colours of the sewing thread used must correspond with or be similar to the Colours of the embroidered feature or the sewn fabric.

# Z.G.I [ FRONT ] SHEETS

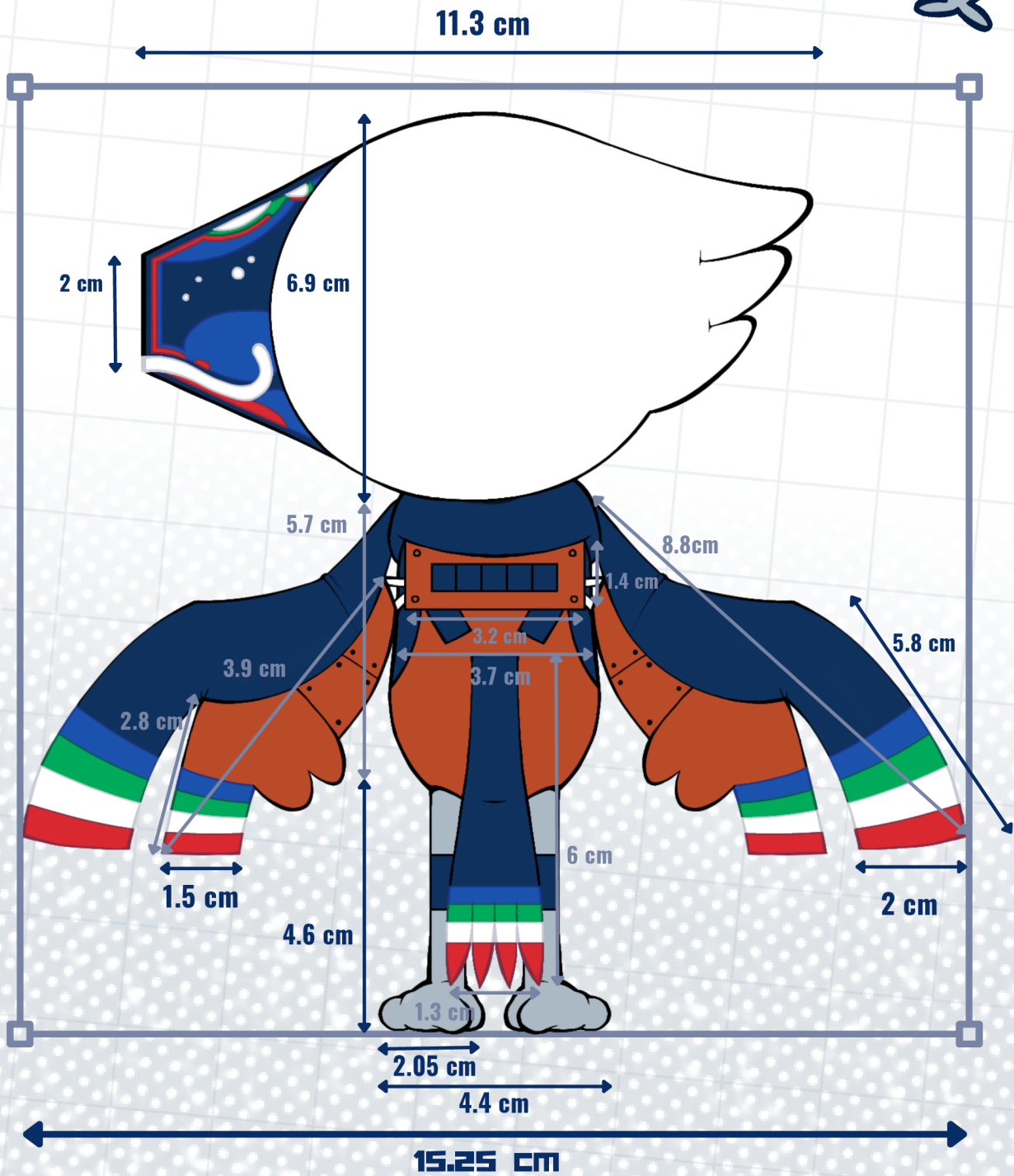
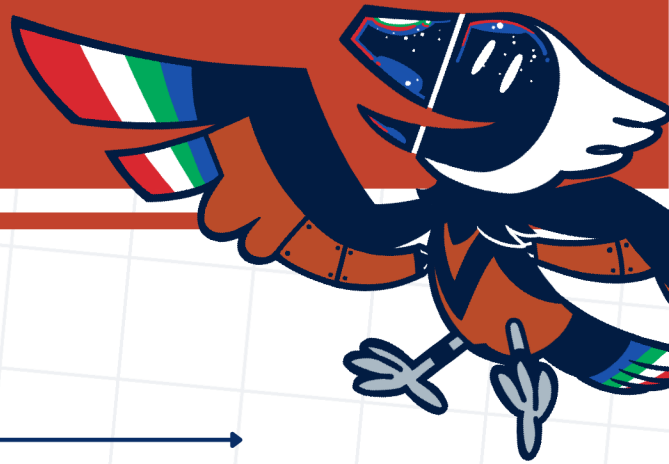




# Z.G.I [ LEFT ] SHEETS



# Z.G.I [ BACK ] SHEETS





# [ RIGHT ]

